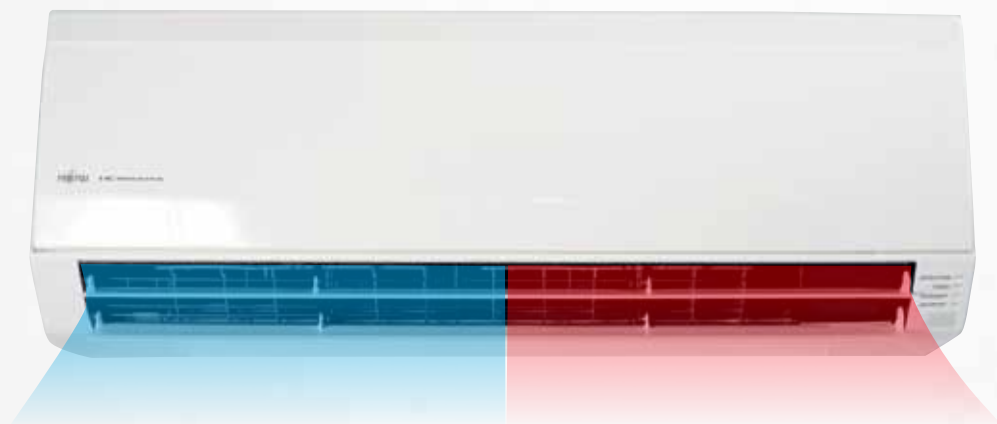


FUJITSU Hi-Wall Premier Range

APRIL 2011



NEW ZEALAND'S FAVOURITE AIR™



Cool dry healthy air
Summer Comfort

Warm, dry clean air
Winter Comfort



NEW ZEALAND'S FAVOURITE AIR™

FUJITSU



NEW ZEALAND'S FAVOURITE HOME IMPROVEMENT

COME HOME TO A WARM WELCOME

Fujitsu engineering delivers all the heat you need just when you need it. You'll be as warm as toast when it is cold outside, wherever you live in New Zealand. The reverse cycle uses the same engineering to cool and dehumidify your home environment in summer.



BETTER THAN EVER ENERGY SAVINGS

Fujitsu's DC and Inverter technologies save more power than ever before.

The savings are significant, with a COP of 4.66 for the ASTG09, you will get up to 4.66kW of heat for every 1kW of power you use. Sounds unbelievable doesn't it, but it's true. If you'd like to learn more about how heat pumps work, check our website – www.fujitsugeneral.co.nz

A FRESHER, HEALTHIER HOME

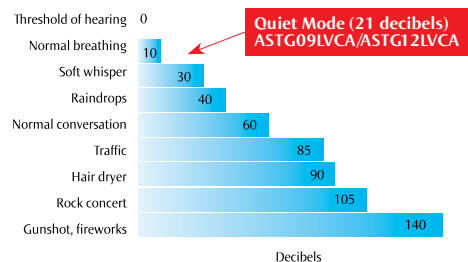
Fujitsu's advanced air purifying and deodorising filters absorb minute dust particles, invisible mould spores, pollen and other harmful micro organisms to give you a healthier home environment. Which is why Fujitsu is recommended by Asthma New Zealand.



JUST QUIETLY

Brilliant fan technology, plus 'quiet mode' on most Fujitsu models means that noise is not an issue with Fujitsu. Compare our decibel levels (see

back of this brochure) and you will see that even our larger heat pumps operating on full capacity are usually quieter than any other brand in New Zealand. Whisper quiet is a Fujitsu fact – not just an advertising claim.



SIZE MATTERS

Ask your installer about Fujitsu's "Comfort Selector" - this brilliant program takes into account every relevant detail about your home and area to be heated or cooled, so that the perfect heat pump can be selected for your unique circumstances – wherever you live in New Zealand. This free service will also detail running costs, and how much you could save over conventional electric heaters.

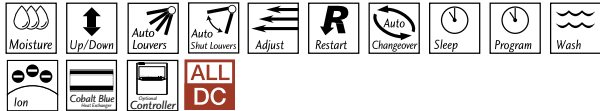


Check our website for FAQ's, detailed information on how heat pumps work and our full range of models.

www.fujitsugeneral.co.nz

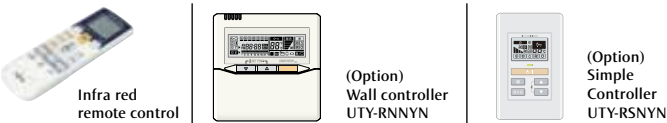
Compact Hi-Wall Premier - LVCA Series

With an elegant flat panel design to compliment any interior, these compact models offer whisper quiet comfort with additional filtration options, latest features and technology. Fantastic efficiencies are achieved due to the improved heat exchange design resulting in high COP energy ratios.



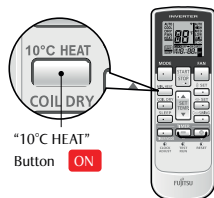
ASTG09LVCA H 3.4kW C 2.5kW Hi-COP: 4.66 (W/W) Hi-EER: 4.31 (W/W)	ASTG12LVCA H 4.8kW C 3.5kW Hi-COP: 4.32 (W/W) Hi-EER: 3.80 (W/W)	ASTG18LVCA H 6.0kW C 5.0kW Hi-COP: 4.03 (W/W) Hi-EER: 3.27 (W/W)
---	---	---

ASTG24LVCA H 7.5kW C 7.0kW Hi-COP: 3.49 (W/W) Hi-EER: 3.11 (W/W)		
	AOTG09/12	AOTG18/24



10°C Heat operation

This function on the remote control will prevent the room temperature from falling below 10°C, so the room will never be too cold when you are away.



Economy Mode

The economy mode will save energy (up to 30% of normal mode). Maintaining a slightly higher temperature in Cool mode and lower temperature in Heat mode, as well as limiting maximum current.

Optional Wall Controller Features

Wall controller can be fitted and the timer set up can switch the unit off and on twice a day automatically. This can be a set and forget function

- Weekly timer (2 x start and 2 x stop settings per day)
- Temperature set back timer enabling different night and daytime temperatures
- Various timer set-up
- Memory back up setting
- Child lock
- Filter maintenance display

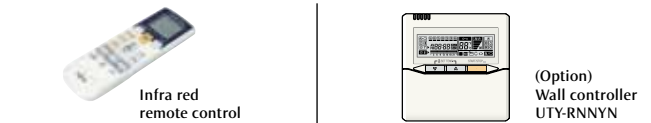
Hi-Wall Premier - LFCA Series

These smart looking models pack a punch with powerful performance, but are also super energy efficient. In fact Fujitsu engineering delivers one of the best power savings of all time. They will heat larger areas effortlessly yet still deliver the quietness, energy savings and features you'd expect from Fujitsu.



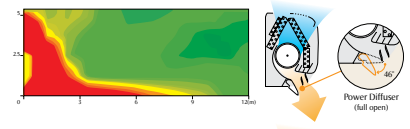
ASTG24LFCA H 8.0kW C 7.1kW Hi-COP: 3.54 (W/W) Hi-EER: 3.27 (W/W)	ASTG30LFCA H 9.0kW C 8.0kW Hi-COP: 3.41 (W/W) Hi-EER: 3.10 (W/W)	ASTG34LFCA H 10.0kW C 9.4kW Hi-COP: 3.30 (W/W) Hi-EER: 3.10 (W/W)
---	---	--

AOTG24LFL	AOTG30LFT	AOTG34LFT

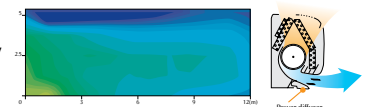


Power Diffuser For LFCA models only

Strong vertical air flow provides powerful floor level heating.

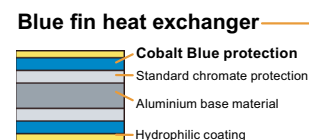


Healthy horizontal air flow does not blow cool air directly at the occupants in the room.



Blue Fin Heat Exchanger

Corrosion-resistance even in coastal areas is improved by blue fin treatment of the outdoor unit heat exchanger.



Apple-Catechin Filter For LFCA models only

Fine dust, invisible mould spores and harmful micro organisms are absorbed onto the filter by static electricity and further growth is inhibited and deactivated.



Long-Life Ion Deodorisation Filter

The filter absorbs common household odours, kitchen and pet smells.



SPECIFICATIONS

		AVAILABLE MAY 2011								
		INVERTER	INVERTER	INVERTER	INVERTER	INVERTER	INVERTER	INVERTER		
Model No.	Indoor Unit	ASTG09LVCA	ASTG12LVCA	ASTG18LVCA	ASTG24LVCA	ASTG24LFCA	ASTG30LFCA	ASTG34LFCA		
	Outdoor Unit	AOTG09LVC	AOTG12LVC	AOTG18LVC	AOTG24LVC	AOTG24LFL	AOTG30LFT	AOTG34LFT		
Cooling Capacities		kW	2.5	3.5	5	7	7.1	8	9.4	
Cooling Range		kW	0.5 - 3.3	0.9 - 4.0	0.9 - 5.8	0.9 - 7.3	0.9 - 8.3	2.9 - 9.0	2.9 - 10.0	
Heating Capacities		kW	3.4	4.8	6	7.5	8	9	10	
Heating Range		kW	0.5 - 4.0	0.9 - 5.6	1.05 - 8.1	1.05 - 8.7	0.9 - 10.6	2.2 - 11.0	2.7 - 11.2	
Star Rating	Cool		4.0	3.0	2.0	1.5	2.0	1.5	1.5	
	Heat		4.5	4.0	3.5	2.0	2.5	2.0	2.0	
E.E.R Cool		W/W	4.31	3.80	3.27	3.11	3.27	3.10	3.10	
C.O.P Heat		W/W	4.66	4.32	4.03	3.49	3.54	3.41	3.30	
Running Current	Cool	Amps	2.8	4.2	6.5	9.4	9.1	10.9	12.8	
	Heat	Amps	3.5	5	6.3	9.0	9.5	11.1	12.8	
Input Power (Max)	Cool	kW	0.58 (1.24 Max)	0.92 (1.42 Max)	1.53 (2.03 Max)	2.25 (2.75 Max)	2.17 (3.21 Max)	2.58 (4.04 Max)	3.03 (4.40 Max)	
	Heat	kW	0.73 (1.56 Max)	1.11 (2.0 Max)	1.49 (3.19 Max)	2.15 (4.18 Max)	2.26 (4.40 Max)	2.64 (4.52 Max)	3.03 (4.52 Max)	
Moisture Removal		L/Hr	1.3	1.8	2.6	2.7	2.7	3.2	3.6	
Fan Speeds			4	4	4	4	4	4	4	
Air Circulation		l/s	225	239	267	267	311	319	339	
Indoor Sound Pressure Level	Quiet	DbA at 1m	21	21	29	32	32	33	34	
	Low	DbA at 1m	30	30	35	37	37	37	37	
	Med	DbA at 1m	36	37	40	42	42	42	42	
	High	DbA at 1m	41	42	46	48	48	49	52	
Outdoor Sound Pressure Level		DbA at 1m	47	48	53	55	56	55	53	
Dimensions and Weights	I.U	Height	mm	293	293	293	293	320	320	320
		Width	mm	790	790	790	790	998	998	998
		Depth	mm	225	225	225	225	238	238	238
		Net Weight	kg	9.5	9.5	9.5	10	14	14	14
	O.U	Height	mm	540	540	620	620	578	830	1,290
		Width	mm	660	790	790	790	790	900	900
		Depth	mm	290	290	290	290	315	330	330
		Net Weight	kg	26	35	40	42	43	61	86
Compressor Type			Twin Rotary	Twin Rotary	Twin Rotary	Twin Rotary	Rotary	Rotary	Rotary	
Interconnect cables - size		Qty - mm2	4 - 1.5	4 - 1.5	4 - 1.5	4 - 1.5	4 - 1.5	4 - 1.5	4 - 1.5	
Recommended Min. Power Cable		mm2	2.5	2.5	2.5	4	4	4	4	
Phase - Frequency		Ph - Hz	1-50	1-50	1-50	1-50	1-50	1-50	1-50	
Power Supply Attachment			Outdoor	Outdoor	Outdoor	Outdoor	Outdoor	Outdoor	Outdoor	
Connection Pipe Sizes	Gas	mm	9.52	9.52	12.7	15.88	15.88	15.88	15.88	
	Liquid	mm	6.35	6.35	6.35	6.35	6.35	9.52	9.52	
Minimum Pipe Length		Metre	3	3	5	5	5	5	5	
Maximum Pipe Length		Metre	20	20	20	20	30	50	50	
Maximum Pipe Height		Metre	15	15	15	15	20	30	30	
Pre Charged Length		Metre	15	15	15	15	15	20	20	
Outdoor Operating Temp	Cool	Degree C	10 to 43	10 to 43	10 to 43	10 to 46	-10 to 46	-10 to 46	-5 to 46	
	Heat	Degree C	-15 to 24	-15 to 24	-15 to 24	-15 to 24	-15 to 24	-15 to 24	-15 to 24	



NEW ZEALAND'S FAVOURITE AIR™

Fujitsu General New Zealand Limited
www.fujitsugeneral.co.nz

Products depicted in this brochure contain high operating pressure R410a refrigerant. It is illegal to vent that refrigerant into the atmosphere. Only persons qualified and experienced in the installation, service and repair of these products are authorised to undertake such work.

Fujitsu General Accredited Installers have shown they have the necessary equipment and have accepted responsibility for their installations and the requirements of any statutes or laws.

Due to ongoing Research and Development specifications and designs are subject to improvement without notice therefore relevant manuals must be consulted before any action is taken to install or service these products.

Heating/Cooling capacities and run current tests are based on the requirements of AS/NZS3823, that standard tests at the temperature below.

COOLING: Indoor Temp: 27°C DB / 19°C WB
Outdoor Temp: 35°C DB

HEATING: Indoor Temp: 20°C DB
Outdoor Temp: 7°C DB / 6°C WB

As actual temperature ranges in New Zealand vary considerably only competent people should provide advice as to size and placement of units.

Recommended cable sizes are based in AS/NZS3000 and AS/NZS3008.

Fujitsu General New Zealand Ltd warrants the equipment against any defects in materials and factory workmanship for a period of five years from the date of installation, or for 6 years if installed by an Accredited Installer.

This warranty does not cover defects or failures which are attributable to; incorrect or improper installation; environmental damage; airflow restriction; inadequate electrical supply; getting access to the product.

EXPLANATION OF FEATURES

- Moisture Removal**
The computer effectively dehumidifies the air.
- Up/Down Swing Louvers**
The up/down flaps automatically swing to up and down.
- Right/Left Swing Louvers**
The right/left flaps automatically swing in either direction.
- Double Swing Automatic**
Complex swing action of flaps enables automatically to swing both horizontal and vertical directions.
- Automatic Louvers**
The position of the louvers is set automatically to match the operating mode. It is also possible to adjust the louvers using the remote control.
- Auto Shut Louvers**
The auto shut louvers close or open automatically when the unit stops or starts.

- Automatic Air Flow Adjustment**
The micro-computer automatically adjusts the air flow effectively to follow the changes of room temperature.
- Auto Restart**
In the event of a temporary power failure, the air conditioner will automatically restart in the same operating mode as before, once the power supply is restored.
- Auto-Changeover**
The unit automatically switches between heating and cooling modes based on your temperature setting and the room temperature.
- Sleep Timer**
The micro-computer gradually changes the room temperature automatically to afford a comfortable night's sleep.
- Program Timer**
This digital timer allows selection of one of four options.
ON, OFF, ON → OFF, or OFF → ON.

- Washable Panel**
- Long-life Ion deodorisation filter**
- Apple-catche filter**
- Wall (wired) controller**
Weekly, set back timers, built-in thermostat, child lock, maintenance display, easy-to-use.
- Cobalt Blue Heat Exchanger**
Outdoor unit fins are coated with a blue corrosion resistant material to enhance durability and extend performance life of your heat pump.
- Energy Star**
The global mark of energy efficiency
- Cooling**
- Heating**

EXPLANATION OF TERMS

Capacity – the higher the capacity, the more area and faster the heat pump will heat (and cool) the room.

COP – Stands for coefficient of performance or (more simply!), the relationship between energy used and heat delivered. For example with a heating COP of 4.11 – you will get 4.11kW of heat for every 1kW of energy used.

Energy Star Rating – your quick guide to energy efficiency – more stars means more efficient.

Indoor Sound – measured in decibels, this is the sound level of your indoor unit at selected fan speeds. For example 20-30 decibels is less than the sound of a human whisper.

Heating Range – with our Kiwi winter, your heat pump needs to be able to supply heat indoors, even when its -15°C outside!

Fujitsu General proud sponsors of:

